

HERITAGE FUNERAL CENTRE

O'Connor Bros. & Ralph Day Chapels



**Welcome to Central Toronto's
newest and most spacious funeral home**

Serving the people of our community for four generations

Family Owned and Operated

Managing Director: Joseph P. Peters

50 Overlea Blvd, Toronto, ON M4H 1B6

T: 416 423 1000 F: 416 424 2074

www.heritagefuneralcentre.ca

Effective January 1, 2021

Statement of Principles & Values

1. Our plan is simple: to be the best funeral home in all of Toronto with fair prices. Exceptional staff and excellent facilities, and to be an active supporter of our faith and community.
2. We care for the departed with utmost care, dignity and respect.
3. Our funeral directors are compassionate professionals who earn the trust of families they care for. They are not paid any commission or pressured by sales quotas.
4. Only Heritage professionals direct our funerals.
5. Embalming work is usually done at Heritage by our professionals.
6. Our ownership and all of our Funeral Directors and Funeral Consultants are of Christian faith.
7. Our only priority is to exceed each family's expectation for the funeral service of their loved one.
8. All families we are privileged to serve, receive outstanding service at a fair price.

Forward

Thank you for taking the time to consider **HERITAGE FUNERAL CENTRE O'Connor Bros. & Ralph Day Chapels** for funeral arrangements.

For family and friends, a funeral service is often one of life's most memorable events. Reputation, service and facilities should be considered, along with price, to properly "value" the funeral service being considered.

In our view, the single most important consideration to make this a memory to cherish, is outstanding service. Our exceptional staff take great pride in the many tributes we receive from families. Our Client Satisfaction Surveys continually rate our Overall Level of Service as "Excellent".

Our newly renovated facility is the largest and newest in central Toronto and is regularly complimented for its easy accessibility, convenient location, parking and spaciousness – and it's all on one level!

Heritage has earned the trust of many families who have made our firm their funeral home of choice whenever the need arises.

We are privately owned and operated by Mr. Glen Day and his family, carrying on his family's legacy in funeral service for the fourth generation.

Please visit our website for more information and to read testimonials from the many families we have served.
www.heritagefuneralcentre.ca

Casket Selections – Supplied by Victoriaville & Co.

Name & Description	Code	Size	Price (plus HST)
Basic MDF Shell MDF & Fiber No Fixed Interior	79-5084-01	Adult Standard	\$ 150
Glencove PC Select Wood Natural Cotton Interior	A8810-01008	Adult Standard	\$ 375
Toledo Blue Cloth Fabric Covered White Rayon Interior	90-55-01	Adult Standard Available in Oversize	\$ 675
Diamond Poplar Construction White Rayon Interior	50-479-01	Adult Standard	\$ 990
Digby Solid Ash Trimmed Beige Crepe Interior	32-62-12	Adult Standard	\$ 1,810
Homewood Solid Poplar, Personalized Keeksake Corner System Trimmed Tan Crepe Interior	52-5410-00	Adult Standard	\$ 1,990
Regal Solid Poplar Trimmed Tan Crepe Interior	50-5470-00	Adult Standard	\$ 2,270
Dominion Solid Silver Maple Trimmed Tan Crepe Interior	20-5610-01	Adult Standard Available in Oversize	\$ 2,550
Michaelangelo Solid Maple, Personalized Keeksake Corner System Trimmed Beige Velvet Interior	20-5610-00	Adult Standard	\$ 3,190
Wabash Solid Wild Black Cherry, Personalized Keeksake Corner System Trimmed Beige Velvet Interior	05-5550-01	Adult Standard Available in Oversize	\$ 3,570
Glen Rose Ladies Octagon Solid Mahogany Trimmed Beige Velvet Interior	01-5910-10	Adult Standard	\$ 3,850
St. Thomas Solid Oak Trimmed Ivory Velvet Interior	10-501-00	Adult Standard	\$ 3,910
St. Patrick Solid Ribbon Grained Mahogany, Personalized Keeksake Corner System Trimmed Beige Velvet Interior	01-5910-10	Adult Standard	\$ 4,350
Bordeaux P.C. Solid Wild Black Cherry Trimmed Beige Velvet Interior	05-9600-00	Adult Standard	\$ 5,298
Bordeaux Full Couch Solid Wild Black Cherry Trimmed Beige Velvet Interior	05-9600-64	Adult Standard	\$ 5,788
CEREMONIAL RENTAL CASSET			
Dominion Ceremonial Solid Silver Maple Shell (Multi Use Engineered Design and a Includes Poplar Casket Insert)	20-5610-25	Adult Standard	\$ 1,095

Explanation of Services

Professional & Staff Services:

- **Basic Professional Services** **\$ 500**
Professional consultation with licensed funeral personnel, which may include but is not limited to, expert advise on options to meet your needs, including essential services relating to the disposition, and advising regarding possible government benefits.
- **Co-ordinating Rites and Ceremonies** **\$ 950**
Planning and scheduling of services, drafting notices, webhosting of funeral details and online condolences, coordination of all rites and ceremonies, before during and after they have been provided, including services.
- **Documentation – Permits, Forms etc.** **\$ 200**
Completion and filing of all documents necessary to carry out the services and supplies requested, including, but not limited to, death registration, burial permit, coroner's certificate as required. As part of this service, we will provide 10 Proof of Death Certificates; such certificates are usually accepted for most estate settlement purposes, however, sometimes a Provincial Death Certificate will be necessary and is available from the Office of the Registrar General. As requested, supply, completion and filing of Canada Pension Plan Death and Survivor Benefit application forms.
- **Transport of Remains** **\$ 275**
From one location to Heritage, for example the hospital to our premises, using a transfer vehicle, for distances not exceeding 40 kms. Use of General Duty Vehicle is included in the price.
- **Subsequent Transport of Remains** **\$ 275**
Will occur when the remains are transported from Heritage to another place, for example to a crematorium, using a transfer vehicle, for distances not exceeding 40 kms. Use of General Duty Vehicle is included in the price.
- **Transport of Remains – Additional Staff** **\$100**
Applies for any transport requiring additional staff.
- **Basic Preparation/Essential Care of Remains** **\$ 300**
(Requires facilities of basic clinical care/preparation/shelter) The basic preparation of the body for placement into the casket, including bathing, dressing and setting of facial features for Identification or viewing without embalming.
- **Embalming/Clinical Care of Remains** **\$ 350**
(Requires facilities of basic clinical care/preparation/shelter). The embalming or Clinical Care is the process of replacing blood and body fluids with chemical preservatives. It is a process of sanitation, restoration and temporary preservation. Embalming is not legally required, but may be recommended to preserve the remains between time of death, the visitation or disposition of the deceased. We will make a recommendation based on the condition of the remains and expected service needs. This charge is in addition to Basic Embalming of Remains.

- **Staff Services for Visitation** **\$ 300 - 800**
Staff to coordinate and oversee the visitation (informal gathering) at Heritage for up to 4 hours. If the visitation takes place at an offsite location, additional staff service charges will apply. Additional staff service charges will be incurred for set up and travel time over the basic time allotment of \$300 with a maximum time charge of 2 hours at \$200 per person per hour.
- **Staff Services for Ceremony – Graveside** **\$ 300**
Staff to coordinate and oversee a ceremony at graveside.
- **Staff Services for Ceremony – Onsite** **\$ 500**
Staff to coordinate and oversee a ceremony at Heritage.
- **Staff Services for Ceremony – Offsite** **\$ 800**
Staff to coordinate and oversee a ceremony at a church.

Facilities and Requirements:

- **Basic Facilities** **\$ 400**
Use of general and common areas, parking lot, washrooms, cloakrooms, heating, air conditioning, lighting and maintenance.
- **Facilities for Clinical Care/ Embalming/Shelter** **\$ 420**
Facilities used to prepare, embalm and /or shelter the remains: this charge applies whenever the remains are in our facility for up to 3 days.
- **Facilities for Private Family Confirmation Viewing** **(N/C)**
A private gathering of immediate family to view and identify the deceased is required prior to cremation. This does not include a ceremony or public visitation.
- **Facilities for Visitation – Suite** (Requires staff services for visitation) **\$ 650**
One of Family Room, Leaside suite or Fireside Suite and its furnishings for visitation for up to 4 hours.
- **Facilities for Visitation – Chapel** (Requires staff services for visitation) **\$ 1400**
One of Ralph Day, O'Connor or Overlea Chapel and furnishings for visitation for up to 4 hours. Includes private coffee lounge, if available, with coffee, tea and water.
- **Facilities for Ceremony** (Requires staff services for ceremony) **\$ 900**
As selected at Heritage for ceremony or memorial service.

Equipment and Vehicles:

- **Lead Car or General Duty Vehicle** **\$200**
For 3 hours to transport the Officiant, lead the procession to place of worship, cemetery and or crematorium. Delivery and retrieval of documents, supplies or cremated remains as required.
- **Funeral Coach** **\$ 450**
For up to 3 hours to transport the casketed remains from Heritage to place of worship and or place of disposition.
- **Flower Vehicle** **\$ 175**
For transporting floral tributes

- **Funerary Equipment** **\$ 500**
For set up and various accoutrements to the extent available for visitation and ceremony including funeral flags, casket bier, church carriage, flower stands, religious icons, vigil candle, candles, display tables, cemetery table, censer, religious crossed or symbols, candle boxes, money boxes, easels, podiums, sound equipment, organ, piano and / or television.

Other Services or Supplies:

- **Transportation Overtime Charge** (per half hour or part thereof) **\$ 55**
For each vehicle over the four (4) hour time limit included in the base charge.
- **Transport Additional Charge** (per km one way) **\$ 2**
For each vehicle
- **After Hours Transfer of Remains** **\$ 300**
Is charged when the transport into our care outside of normal business hours between 6 pm and 8 am.
- **Additional Preparation** **\$ 300**
Is in addition to the Embalming of Remains in circumstances where an infectious disease maybe present, an autopsy has been performed or limited restorative work has been done.
- **Transfer of Infectious Remains – Additional Staff** **\$ 100**
Is in addition to base additional staff charge and is required where two staff persons are needed where infectious disease is possibly present.
- **Removal of Pacemaker or Implant** **(N/C)**
Will be carried out by a licensed funeral director as required.
- **Infection Control Equipment** **(N/C)**
Includes plastic shrouds for remains, personal protective equipment for transfer staff and preparation staff, safe disposal of equipment as is required when infectious disease is possibly present.
- **Staff Services – Saturday, Sunday or Holiday** **\$ 350**
Applies if a visitation or ceremony occurs on any of these days.
- **Staff Services – Pallbearer** (For 3 hours and \$ 20 for each additional ½ hour) **\$ 150 ea.**
Can be supplied by Heritage as needed for carrying the casket. Generally, 6 pallbearers are needed to carry the casket.
- **Refundable Deposit for Cremated Remains** **\$ 350**
Is paid when cremation is selected. Funds will be refunded provided the remains are claimed within 30 days.
- **Live Stream and Webcast** **\$ 200**
Recording of Funeral /Memorial Services

Traditional Service Package

A Traditional Service Package offers our facility for visitation and /or gathering and service. Our services include all documentation, staffing and vehicles required for the visitation and service, following through to burial or cremation. This type of service is for the family that prefers one day of visitation (up to 4 hours) at Heritage Funeral Centre in a suite followed by a Funeral Service the next day in a Church or our Chapel followed by procession to a Cemetery or Crematorium.



Professional and Staff Services:

Basic Professional Services	\$ 500
Co-ordinating Activities Rites & Ceremonies	950
Transportation of Remains – Basic	275
Basic Preparation/Essential Care of Remains	300
Embalming/Clinical Care of Remains	350
Documentation – Permits, Forms, etc.	200
Staff Services for Visitation	800
Staff Services for Ceremony – Offsite	800

Facilities:

Basic Facilities	400
Facilities for Preparation, Embalming & Shelter	420
Facilities for Visitation - Suite	650

Equipment and Vehicles:

Funerary Equipment	500
Lead Vehicle/General Duty Vehicle	200
Funeral Coach	<u>450</u>

Itemized Total Price **\$6,795**

Unless otherwise indicated, prices do not include applicable taxes.

One Hour Visitation & Funeral Service Package

One Hour Visitation and Funeral Service Package offers our facility for one (1) hour visitation and /or gathering prior to a formal ceremony or service in our Chapel or at Church. Our services include all necessary documentation, staffing and vehicles required for the visitation and service, following through to burial or cremation.



Professional and Staff Services:

Basic Professional Services	\$ 500
Co-ordinating Activities Rites & Ceremonies	950
Transportation of Remains – Basic	275
Basic Preparation/Essential Care of Remains	300
Embalming/Clinical Care of Remains	350
Documentation – Permits, Forms, etc.	200
Staff Services for Visitation	300
Staff Services for Ceremony – Offsite	800

Facilities:

Basic Facilities	N/C
Facilities for Preparation, Embalming & Shelter	420

Equipment and Vehicles:

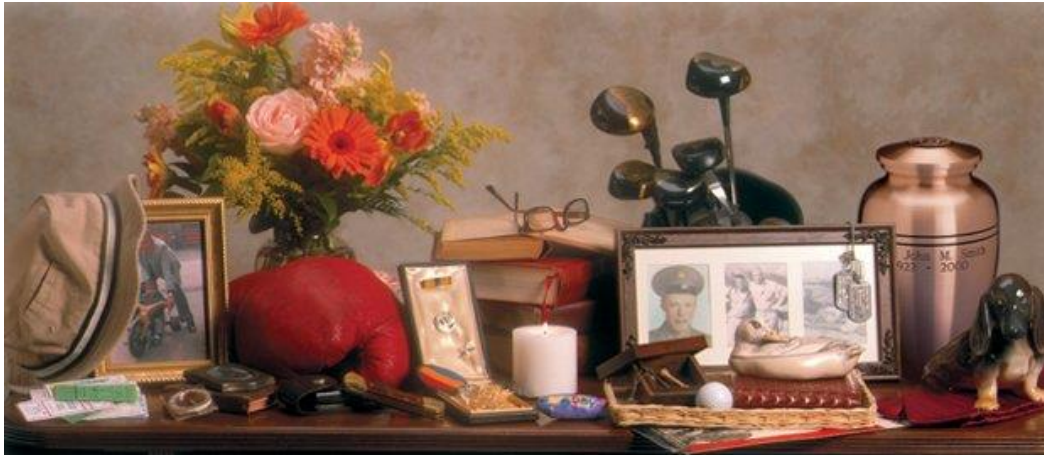
Funerary Equipment	500
Lead Vehicle/General Duty Vehicle	200
Funeral Coach	<u>450</u>

Itemized Total Price **\$5,245**

Unless otherwise indicated, prices do not include applicable taxes.

One Hour Visitation & Memorial Service Package

One Hour Visitation and Memorial Service Package offers our facility for one (1) hour of visitation and /or gathering prior to a memorial service in our Chapel or at a Church. Our services include all necessary documentation, staffing and vehicles required for the visitation and memorial service.



Professional and Staff Services:

Basic Professional Services	\$ 500
Co-ordinating Activities Rites & Ceremonies	950
Transportation of Remains – Basic	275
Basic Preparation/Essential Care of Remains	300
Embalming/Clinical Care of Remains	350
Documentation – Permits, Forms, etc.	200
Staff Services for Visitation	300
Staff Services for Ceremony – Offsite	800

Facilities:

Basic Facilities	N/C
Facilities for Preparation, Embalming & Shelter	420

Equipment and Vehicles:

Funerary Equipment	500
Lead Vehicle/General Duty Vehicle	200
Funeral Coach	<u>450</u>

Itemized Total Price

\$5,245

Unless otherwise indicated, prices do not include applicable taxes.

Graveside Service Package

A Graveside Service includes all necessary documentation, staffing and vehicles required for a service at a cemetery for casket burial in a grave, entombment in a mausoleum crypt or placement of an urn in a niche wall.



Professional and Staff Services:

Basic Professional Services	\$ 500
Co-ordinating Activities Rites & Ceremonies	950
Transportation of Remains – Basic	275
Basic Preparation/Essential Care of Remains	300
Embalming/Clinical Care of Remains	350
Documentation – Permits, Forms, etc.	200
Staff Services for Ceremony at the Graveside	300

Facilities:

Basic Facilities	N/C
Facilities for Preparation, Embalming & Shelter	420

Equipment and Vehicles:

Funerary Equipment	N/C
General Duty Vehicle	N/C
Funeral Coach	<u>450</u>

Itemized Total Price **\$3,745**

Unless otherwise indicated, prices do not include applicable taxes.

Cremation or Burial Only Package

Cremation or Burial Only includes all necessary documentation and registration, staffing and general duty vehicle. There is no funeral or cremation service.



Professional and Staff Services:

Basic Professional Services	\$	500
Transportation of Remains – Basic		275
Subsequent Transportation of Remains		275
Basic Preparation/Essential Care of Remains		300
Documentation – Permits, Forms, etc.		200

Facilities:

Basic Facilities		N/C
Facilities for Preparation, Embalming & Shelter		420

Equipment and Vehicles:

Funerary Equipment		N/C
General Duty Vehicle		200

Itemized Total Price **\$2,170**

Unless otherwise indicated, prices do not include applicable taxes.

Additional Services & Supplies

Vault (Concrete Outside Container)

Price

Supplied by Superior Vault Company Limited

Eagle Sentinel – Gold or Silver	(34" x 90" x 29")	\$ 1,550
Doric Patrician – White/Black	(35" x 90" x 29")	\$ 2,110
Athenian Rose -		
Athenian Stainless -		
Lydian Copper -		
Lydian Bronze -		

Tribute Stationery Supplies

Premium Package includes a Premium Register Book,
50 Thank You Cards, 50 Premium Prayer Cards & Crucifix \$ 255

Standard Package includes a Standard Register Book,
25 Thank You Cards, 50 Standard Prayer Cards & Crucifix \$ 195

Urns

Supplied by Victoriaville & Co.

As Selected

Veneer Scattering Urn	Light Cherry	#US199-20008	\$ 160
Genoa	Metal	#US210-00015	\$ 230
Artisan Earthtone	Solid Poplar	#US150-00276	\$ 265
Allen Light Brown Satin	Solid Maple	#US120-00003	\$ 340
Original Persian Fawn	Solid Oak	#US110-00255	\$ 365
Classic Column	Solid Cherry	#US199-20001	\$ 420
Autum Leaves	Cloisonne	#US450-00004	\$ 520

Many Other Alternatives are Available through Heritage

Disbursements: (Subject to Change)

All disbursements are charged at cost and the following represent some common third party costs. However, depending on the circumstance's others may apply:

• AlphaCare Final Document Service		\$ 500
• Cremation at St. John's Norway Cemetery & Crematorium	(no tax)	\$ 582
• Municipal Death Registration	(no tax)	\$ 55
• Coroner's Fee	(no tax)	\$ 75
• Newspaper Notices		At Cost
• Police Escorts (Based on Availability)		At Cost
• Church Honorarium, Clergy, Cantor, Caretaker		At Cost
• Orthodox Savano Fee, (Inc. Bread, Oil, Wine & Wheat)	(no tax)	\$ 55

Unless otherwise indicated, prices do not include applicable taxes.

How To Find Us

Driving Directions:

Exit Don Valley Parkway (404) at Don Mills Road North. Continue on Don Mills Road North to the first set of lights. Turn left onto Overlea Blvd. Heritage is on the right, at the third set of lights.

Public Transit:

Bloor / Danforth Subway Line:

Broadway Station:

Flemingdon Park Bus #100

Pape Station:

Don Mills Bus #25,
or Thorncliffe Park Drive Bus #81

Yonge Subway Line:

Eglinton Station:

Flemingdon Park Bus #100

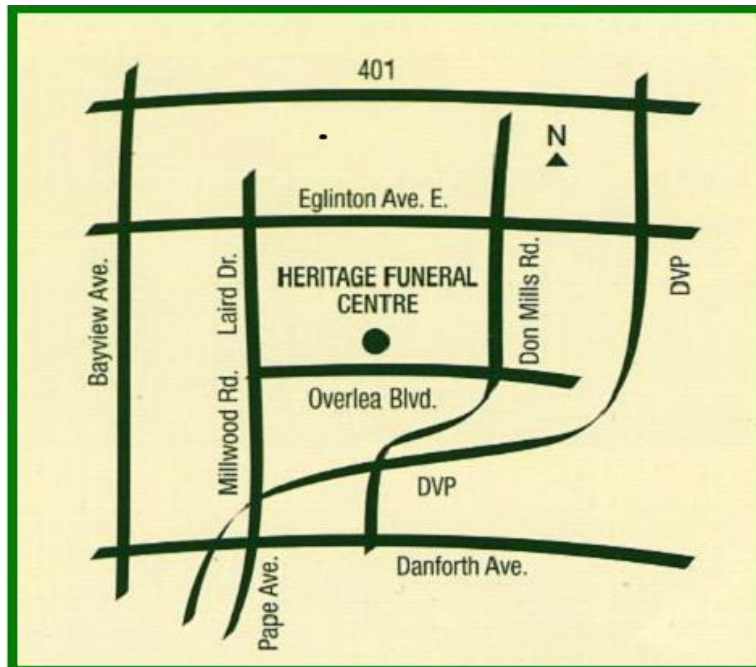
St. Clair Station:

South Leaside Bus #88

Sheppard Subway Line:

Don Mills Station:

Don Mills Bus #25



Please visit our website for more information and to read Testimonials from families we have served.